

PRIMARY 2 PARENTS ENGAGEMENT SESSION

14 JAN 2025



1	Introduction to School Leaders, Year Head , Assistant Year Head, Form Teachers & Subject Teachers.
2	Holistic Education @ NBPS
3	Partnership with Parents
4	Q & A





CULTURE OF CARE





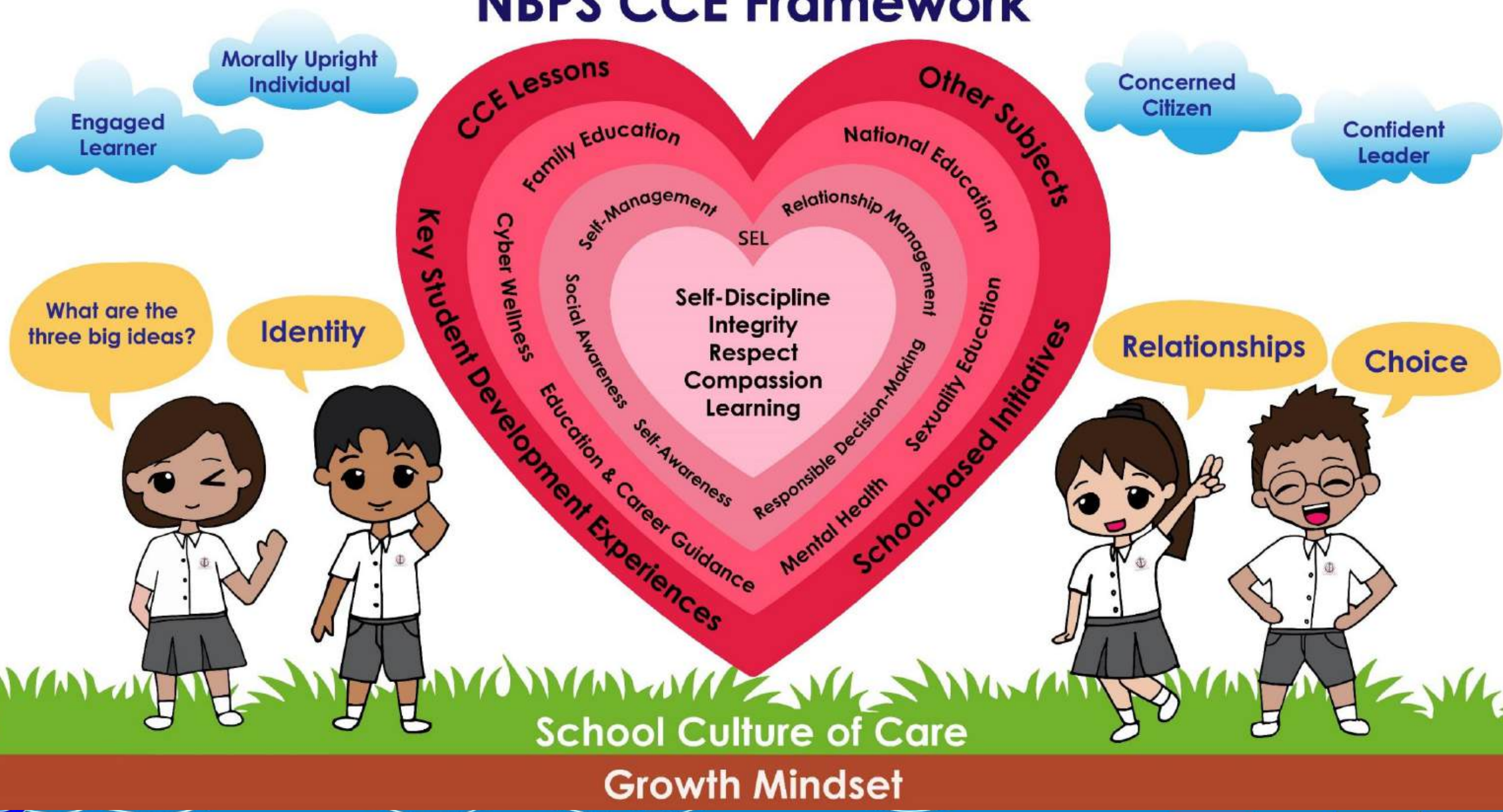
HOLISTIC EDUCATION @NBPS



POSITIVE ENVIRONMENT



NBPS CCE Framework

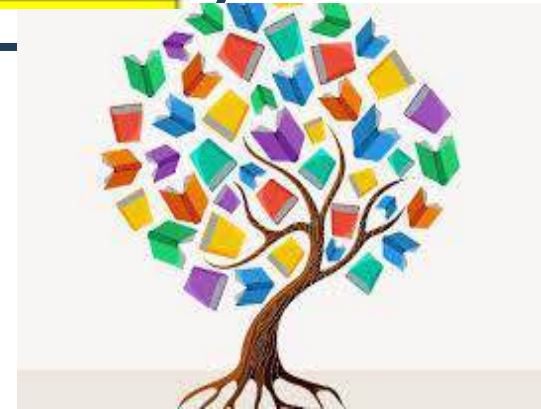


Growth Mindset @ NBPS

Growth Mindset Statements

P1 I Can Do This!

P2 I Can Learn!



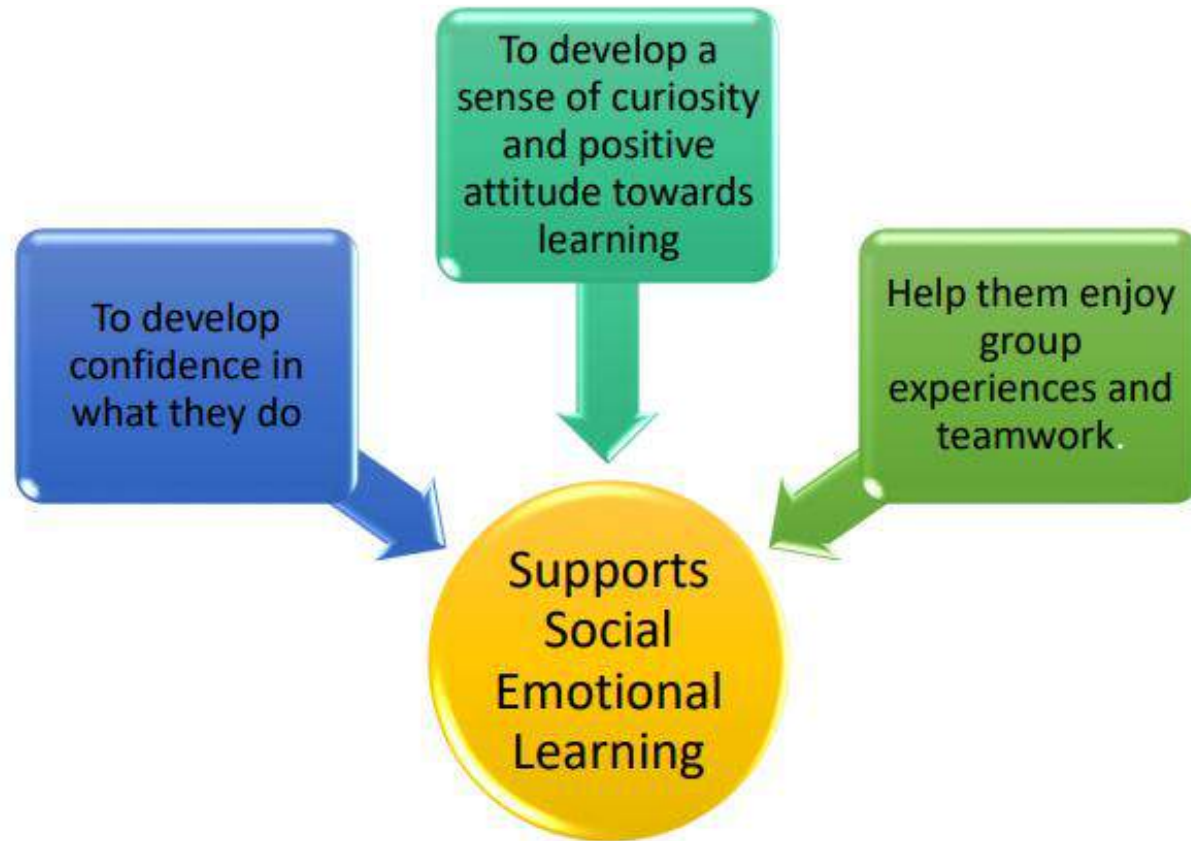


Circle Time



Programme for Active Learning (PAL)

Objectives of PAL



Programme for Active Learning (PAL)

Outdoor Education



Programme for Active Learning (PAL) *Sports & Games*

VALUES

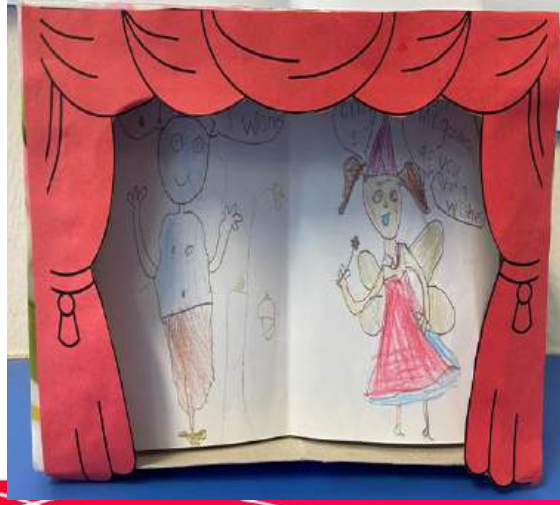


Programme for Active Learning (PAL)



Performing Arts

Build Motivation and Confidence



Arts for Every Navalite

Building Confidence

Arts Beat Carnival

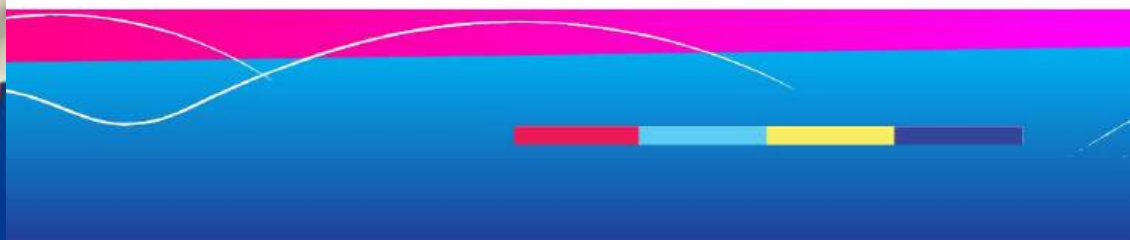


Navalites Got Talent



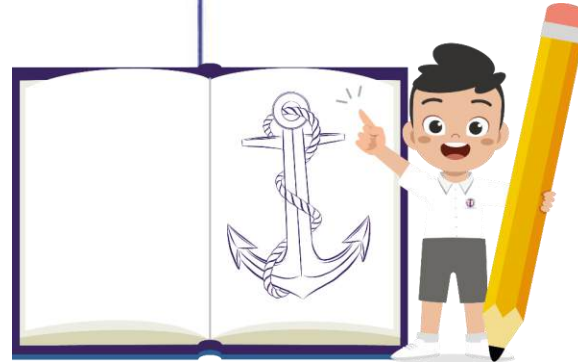


Lower Primary Sports Day



Joy Of Learning begins at Naval Base Primary School!

Joy of Learning begins at Naval Base Primary School!



ENGLISH





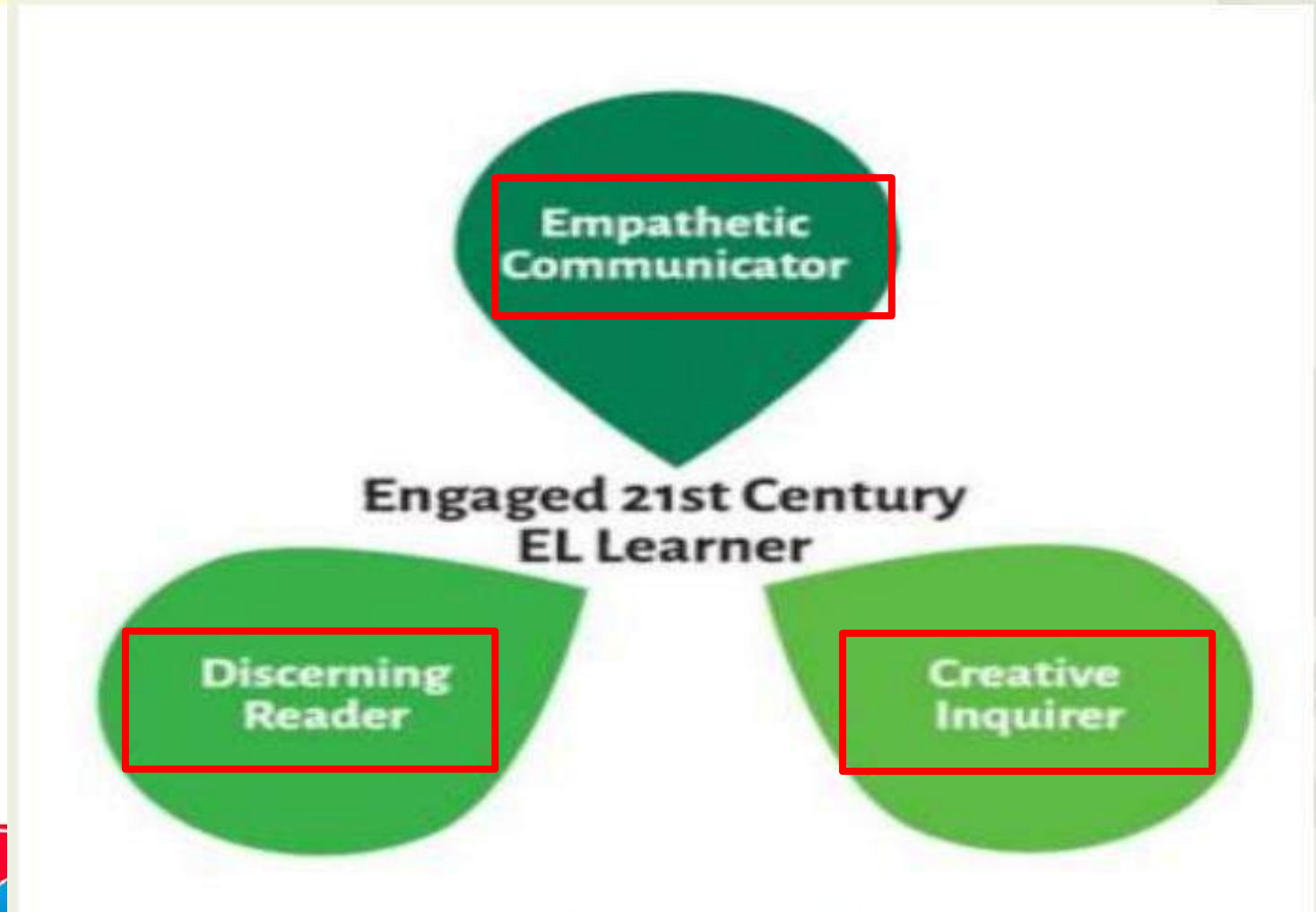
STELLAR[®] 2.0



(STrategies for English Language Learning and Reading)



EL Syllabus 2020 & STELLAR 2.0

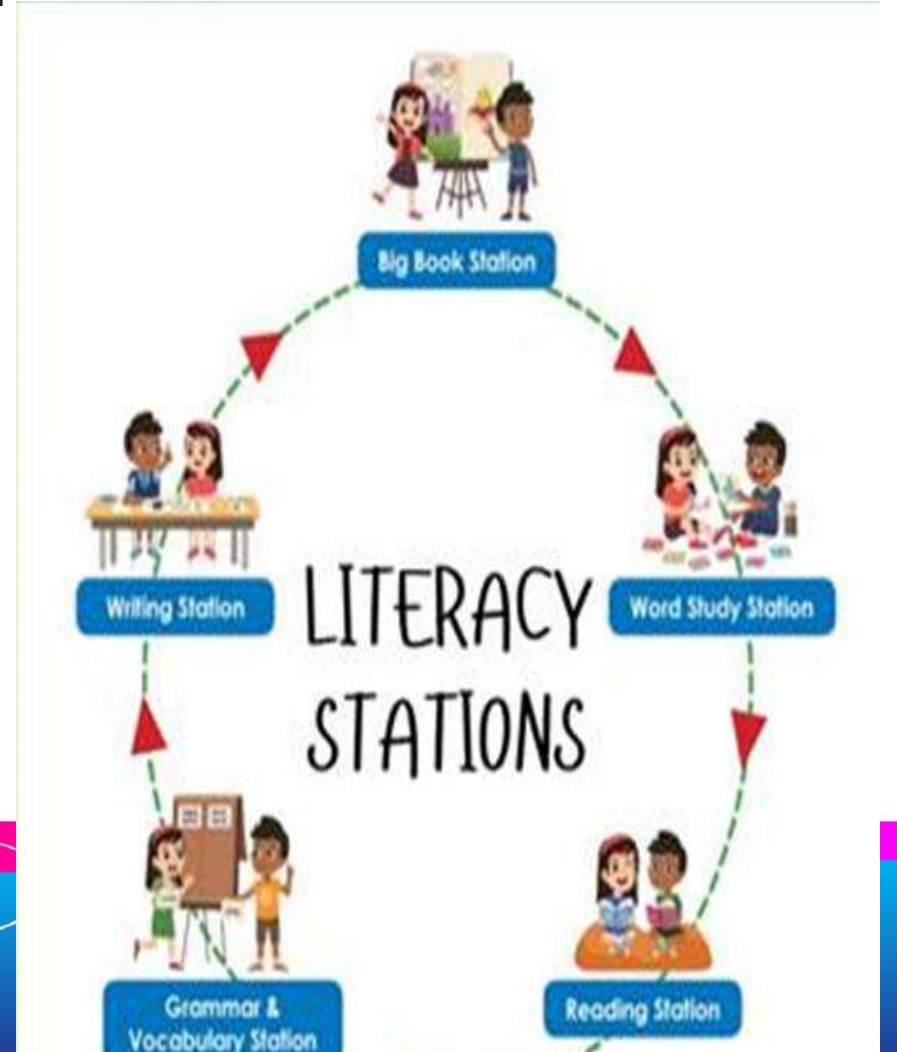


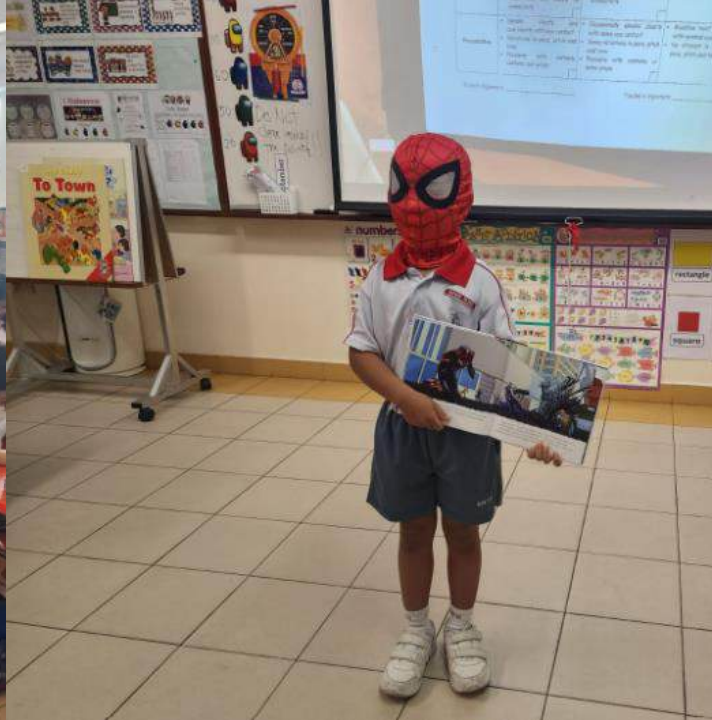
The three teaching strategies underpinning the STELLAR approach

Shared Book Approach (14 Big Books)

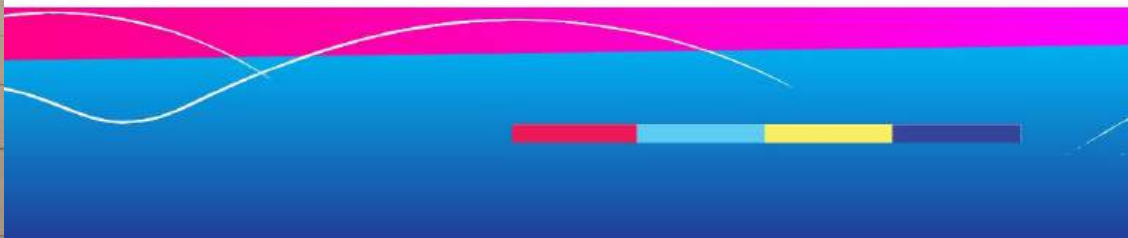
Modified Language Experience Approach

Literacy Stations



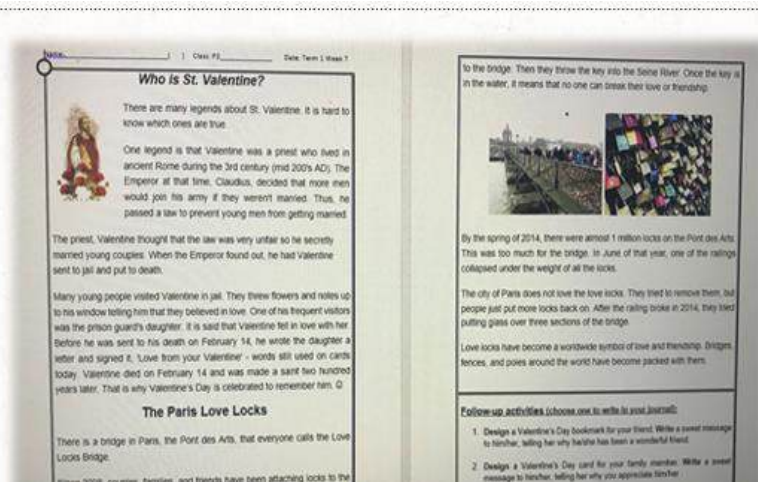


Positive Learning Environment



Instilling Love for Reading

- Morning silent reading in class
- DigiREAD (e-Books for Extensive Reading - weekly)
- STAR Readers
- KidsREAD



English Programme 2025



La Fiesta (May 2025)

Week of English-related activities to promote a love for the language



Joy of Learning – Learning Journey to Bird Paradise



Naval Base Primary School

PERI Holistic Reporting and Communication Guideline (Primary 2) – 2025

Skills and Competencies	Learning Outcomes(LO)
Listening	1) Listen attentively and identify relevant information.
Speaking	2) Speak clearly to express their thoughts, feelings and ideas. 3) Build on others' ideas in the conversations or discussions respectfully.
Reading	4) Read multi-syllabic words accurately 5) Read aloud Primary 2 texts with accuracy, fluency and expression 6) Understand Primary 2 texts (e.g. STELLAR text) and are able to identify the big ideas in the texts and recall sequence of main events.
Writing	7) Apply basic spelling strategies using knowledge about phonic elements and spelling rules 8) Write short paragraphs to recount appropriately sequenced events, describe details, and use tenses and connectors accurately.



Joy of Learning begins at Naval Base Primary School!

Our Support Programmes

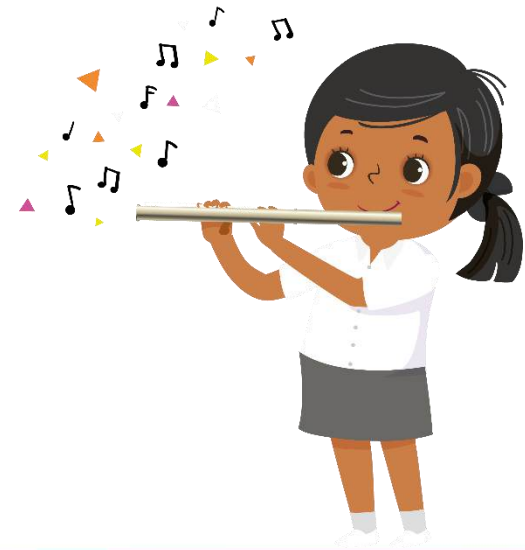
- Learning Support Programme (LSP)
- Morning Reading Programme

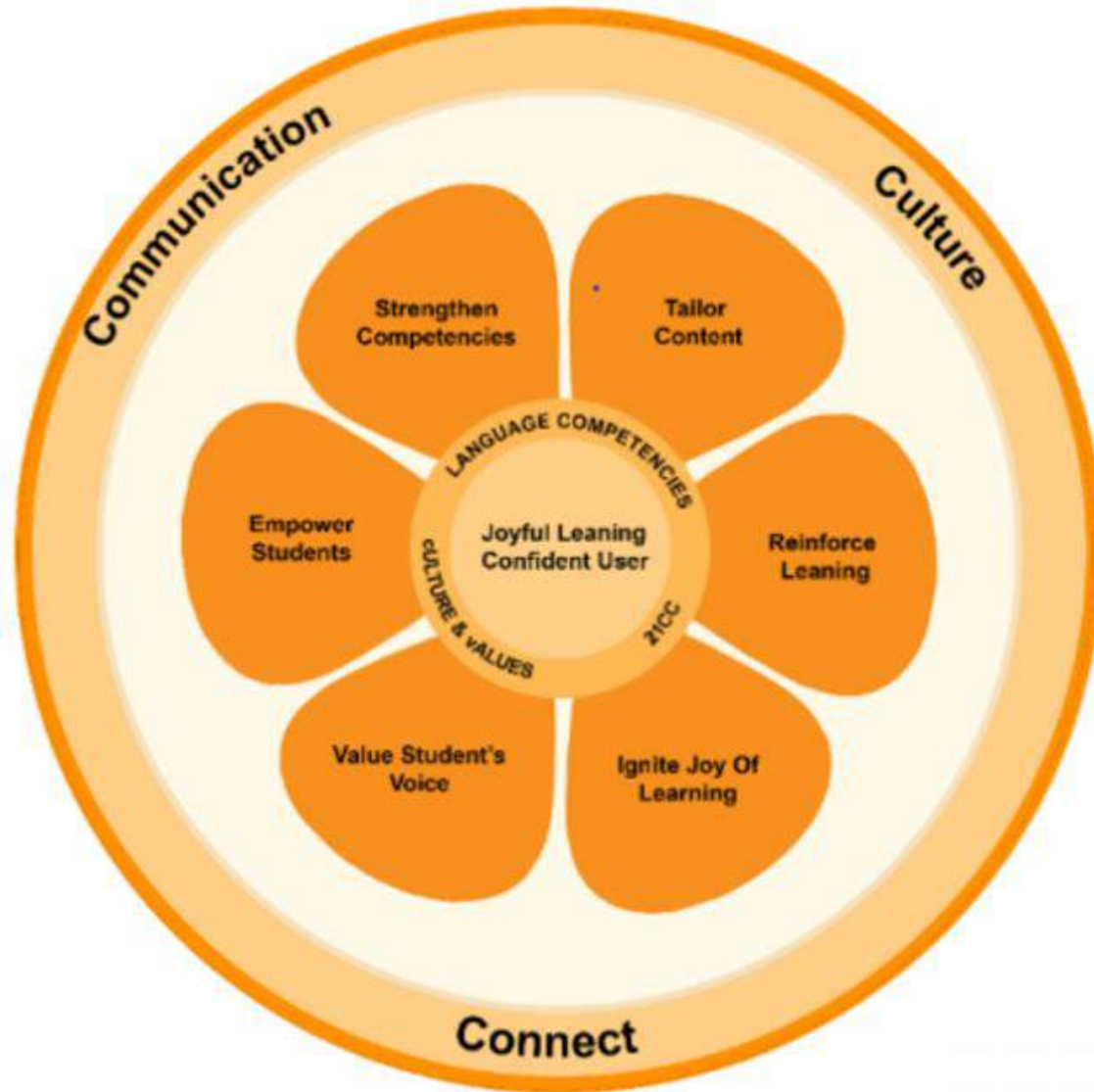


Joy of Learning begins at Naval Base Primary School!



MOTHER TONGUE





Focus on helping students to **experience the joy of learning MTL**, so as to motivate them to like and learn MTL for life.



Resources to support Joy of Learning

Examples of Learning Resources (Chinese)



Examples of Learning Resources (Malay)



Examples of Learning Resources (Tamil)



Instilling the Love for Reading

Spark interest, Open minds, Appreciate cultural roots, Rise as a bilingual reader



Mother Tongue Language(MTL Fiesta)



❖ Exposure to the MTL through cultural & language-based activities or workshops



Skills and Competencies	Learning Outcomes (LO)
Listening	1) Listen attentively to short, simple spoken content related to daily life, identify the main idea and some details.
Speaking	2) Speak with correct pronunciation using vocabulary and sentence structures from Primary 2 texts. 3) Participate in short conversations related to daily life with some guidance.
Reading	4) Recognise characters/words taught in P2 texts 5) Read aloud P2 texts with accuracy and fluency 6) Understand Primary 2 texts and are able to identify details with guidance.
Writing	7) Write short sentence(s) about daily life with guidance.

Higher Mother Tongue starting Primary 3



- ❖ Naval Base Primary School offer Higher Mother Tongue Language (HMTL) across **the 3 official MTLs** from P3 onwards.
- ❖ It is designed to enthuse students who demonstrate the ability and interest to develop **higher levels of MTL language proficiency and cultural knowledge.**





Mother Tongue Support Programme (MTSP)

- Mother Tongue Support Programme (MTSP) is a customized programme initiated by MOE that will provide more individualized support for the child in learning MTL. It will be offered at **Primary 3 and 4 levels** to the selected students.
- Resources are specially designed by CPDD to provide targeted approach in teaching oracy and literacy skills:
 - Explicit and skills-focused
 - Systematic and progressive (simple to complex)
 - Multi-sensory



Supporting Your Child to LOVE to READ

Fun and supportive learning environment is the key!



Cultivate the love of reading books, E.g visit the library or borrow e-books



Encourage them to take small steps in learning the language. E.g. Listen to music or read labels .



Do fun activities together. E.g. watch a movie, mini white board quiz & create vocabulary flash cards.

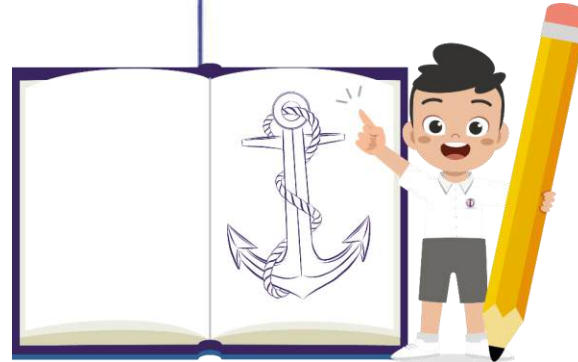


Provide conducive environment for learning the language. E.g. Access to music and books

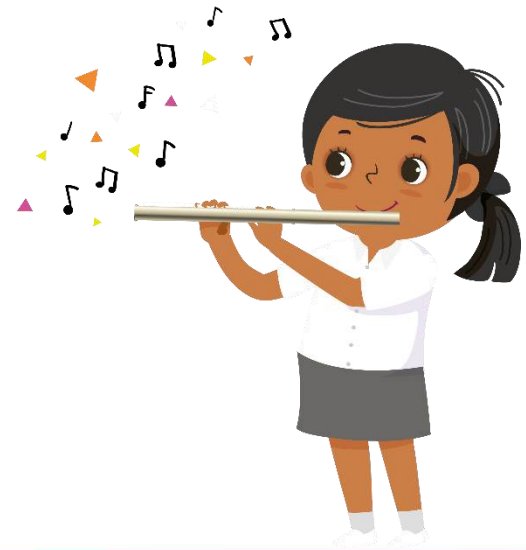


Joy Of Learning begins at Naval Base Primary School!

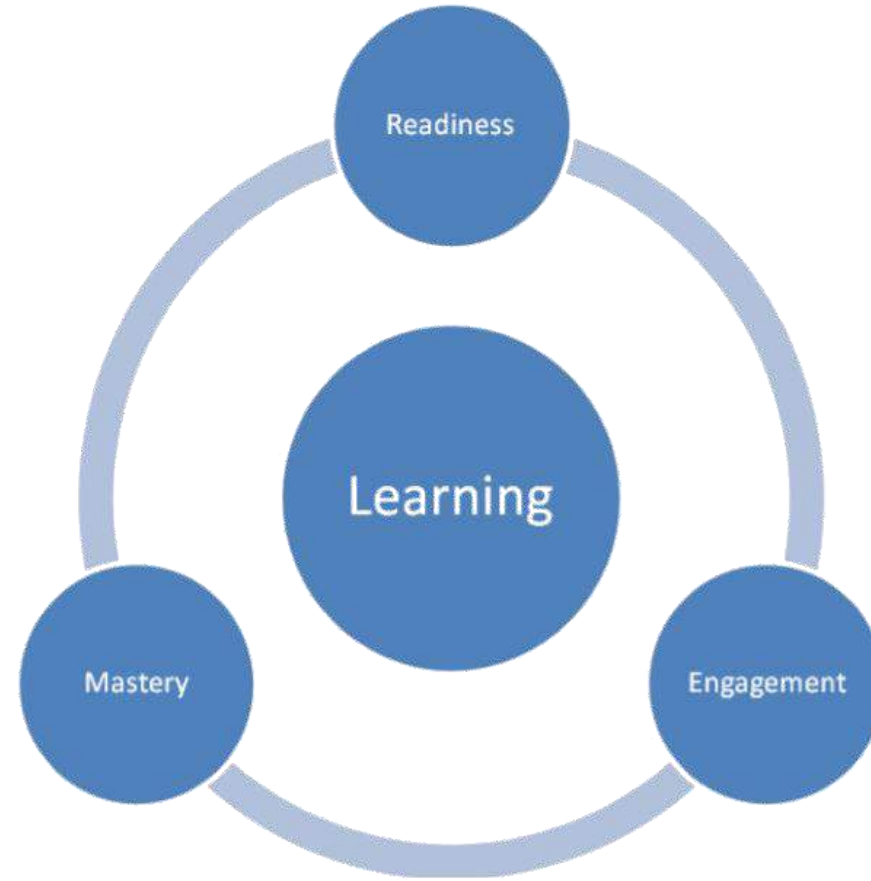
Joy of Learning begins at Naval Base Primary School!



MATHEMATICS



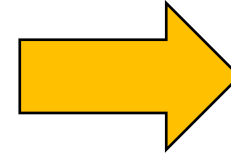
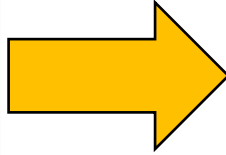
Learning Progression in Mathematics



Readiness → Engagement → Mastery (REM)



Concrete – Pictorial - Abstract



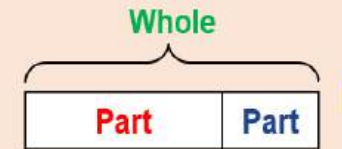


Learning at Primary 2

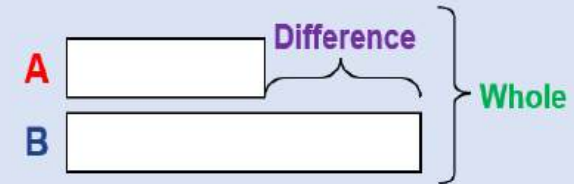
- Develop an understanding of mathematical concepts
- Contextual problems which requires students to draw model
- Develop the ability to reason mathematically
- Word problems reinforce concepts and strategies taught

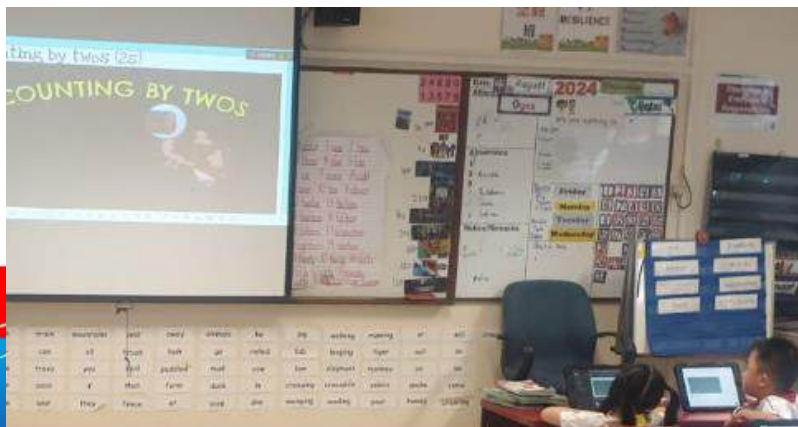
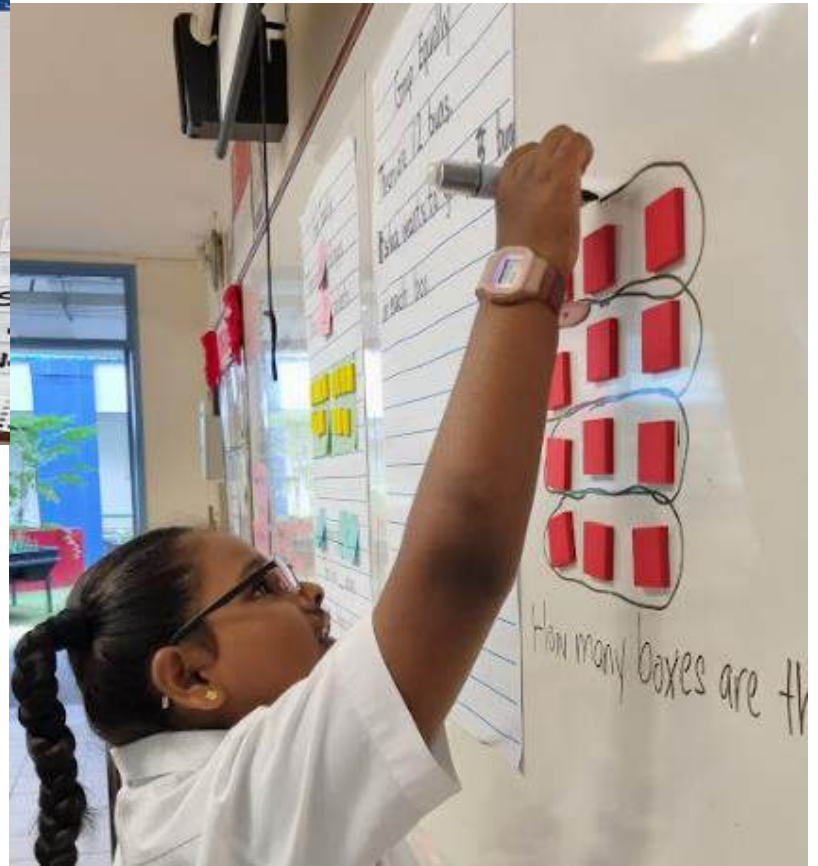
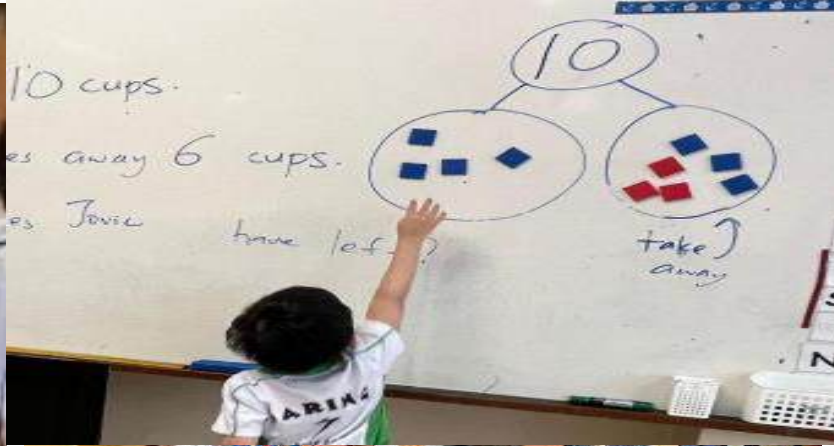
Types of Model (Primary 2)

• Part-Whole Model



• Comparison Model





Positive Learning Environment

Naval Base Primary School

PERI Holistic Reporting and Communication Guideline (Primary 2) – 2025

Learning Outcomes (LO)

LO1	Understand numbers up to thousand
LO2	Solve mathematical problems involving addition and subtraction
LO3	Multiply and divide numbers within multiplication tables
LO4	Identify, name, describe and sort shapes and objects
LO5	Tell time to the minute
LO6	Compare and order objects by length, mass or volume
LO7	Read and interpret picture graphs with scales
LO8	Understand fractions





Learning Support For Mathematics (LSM)

- Specifically designed for identified P1 to P4 students who need to develop basic numeracy skills and build confidence in the subject.
- Lessons are conducted in small groups, allowing students to receive targeted support.





Values, Social-Emotional Competencies & Citizenship Dispositions

- Develop students holistically
- Strengthen their social-emotional competencies
- Ignite their joy of learning



Playing group games to learn about personal space and communicating well with each other



Expressing ourselves through readers theatre, puppetry and more



Being curious about the types of trees and leaves we can find in the garden



Every Navalite A Leader

Self-Discipline | Integrity | Respect | Compassion | Learning

Primary 2



School-based Character Award

- Navalite Award (1 per class, Termly)
- Best Navalite Award (1 per class, Yearly)
- Navalite Honour Award (1 per level, Yearly)

Character Award

- Edusave Character Award (ECHA)
- Edusave Award for Achievement, Good Leadership and Service (EAGLES)

Edusave Award

- Edusave Merit Bursary (EMB)
- Good Progress Award (GPA)



Joy of Learning begins at Naval Base Primary School!



Partnership with Parents



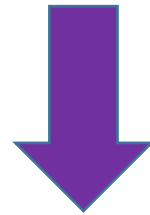
Let's Work Together



“Every Student, an Engaged Learner”

“Every Teacher, a Caring Educator”

“Every Parent, a Supportive Partner”



“Every School, a Good School”





Parents' Role in Supporting Your Child's Learning

Parents can consider doing the following to support their children in their learning.

- Check the child's Navalite Compass daily to view the homework assignments.
- Remind your child that homework is their responsibility and supervise your child in doing the homework assignments.
- Provide a suitable environment for your child to complete the homework assignments.
- Provide appropriate digital device for homework assigned via e-learning platforms such as Student Learning Space (SLS) and Student ICON.





Parents' Role in Supporting Your Child's Learning

- Encourage your child to ask his/her teacher(s) clarifying questions.
- Guide your child to set aside a regular study time and establish good study habits.
- Engage teachers on your child's learning progress.



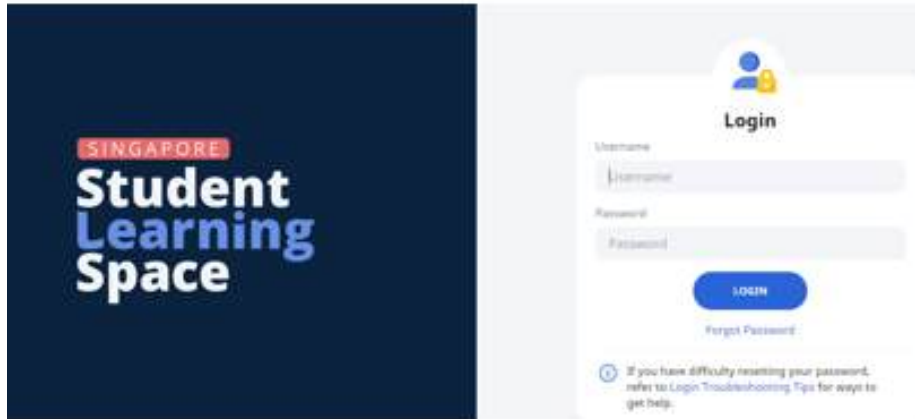


Parents' Communication with Teachers

- Parents can communicate with teachers via Navalite Compass / email / Parents Gateway. For non-urgent cases, a reply will be provided within 3 working days.
- For urgent cases, parents may call the office at 67537114 for teachers to return call during office operational hours from 7.45 a.m. to 5 p.m.



Embracing Technology to Support Learning



Level 1: Starts with the home row keys

In this level you will begin by learning to touch type the keys on the home row as well as letters e, i, r and u.

- Stage 1: f d s a j k l ; g h
- Stage 2: e i
- Stage 3: r u



Play level 1

Play level 1 and click on the button to select the stage you want.



Thank You!



School Website:

www.navalbasepri.moe.edu.sg



<https://go.gov.sg/navalbaseprimary>



Naval Base Primary School



@navalbasepri



**Let's work
hand in hand!**







- URL Link

<https://form.gov.sg/65acb1734bfb580012dcfdd7>

- QR Code

